

**MIDTRONICS**

# CPX-900 ROBIS Battery Tester



Midtronics most accurate and advanced battery tester to date in a portable package. CPX-900 is packed full of features to not only give you more information about the battery's health but to make informing customers simple.

Models available:

- CPX-900 ROBIS P (Printer Model)
- CPX-900 ROBIS (Without Printer)

# CPX-900 ROBIS

## CPX-900 Key Features

- **WiFi Enabled**  
Connect CPX-900 to your WiFi to unlock a host of features.
- **Conductance Profiling**  
Identify batteries with poor reserve capacity, that could start the engine but not support any of the vehicle's other functions.
- **Built in Temperature Sensor**  
Whilst testing, record the battery's temperature to provide more accurate results.
- **Field Swappable Cables**  
By removing one screw, you can replace the cables, limiting downtime.
- **Test Decisions**  
Clear and easy to understand test result decisions, giving technicians their next steps.
- **Emailable results**  
Using WiFi, simply input an email address to send test results digitally.
- **Over-the-air Software Updates**  
Update your tester over WiFi to receive the latest software and new features.
- **Integrated Printer (Optional)**  
No need for an additional printer. CPX-900 has a built-in printer at the bottom of the tester.
- **Number plate entry**  
Enter the vehicles number plate for battery test tracking.



# CPX-900 ROBIS

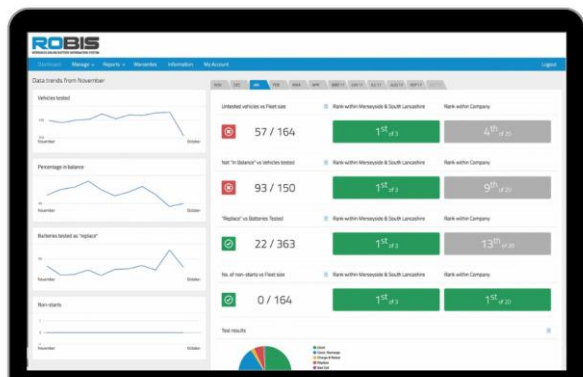


## Make Battery Management Simple with ROBIS

ROBIS is our Industry leading web-based dashboard and reporting system. Battery test results instantly upload from CPX-900, allowing you to analyse battery data quickly and easily.

ROBIS has been designed to work for all workshops no matter what the size.

- **Instant access from anywhere**  
ROBIS is web-based meaning as long as you have an internet connection, you can access ROBIS.
- **Battery Diagnostic Report**  
Easy to read and understand reports using traffic light indicators and easy to understand results.
- **Dashboard**  
Get an overview of battery tests by company or site. The dashboard includes...
  - Ranking within the industry
  - Number of vehicles tested
  - Monthly overviews
  - Trend analysis chart
  - Summary of results filtered by test decision
  - % of 24v sets that are in balance
- **Active warranty management**  
Immediately process warranty claims as they happen.
- **Battery issue detection**  
Detect vehicle and battery performance issues early before the battery fails.
- **Comparisons**  
Track and compare testing over multiple sites



# CPX-900 ROBIS




## ROBIS Battery Diagnostic Report

It has always been difficult to inform customers about their battery's health, resulting in many customers deciding against paying for battery maintenance and then ultimately their battery failing. This is due to how battery test results are difficult for people to understand.

Typically, battery tests are recorded using a printout. The print outs are small, difficult to read and, for anyone without knowledge of how a battery works, difficult to understand.


We have designed a whole new report to make reporting battery health informative and simple to understand in a clear and legible report.


Your Workshop Logo Here

**BATTERY DIAGNOSTIC REPORT**

<b>Your Workshop Name</b>	Test Date: 2023-11-21 14:18:00
<b>Workshop Address</b>	Battery Chemistry: FLOODED Battery Standard: EN Test Location: IN VEHICLE Test ID: 10517711 Vehicle Mileage: 13,500


**YY72 KWG**



**OVERALL BATTERY TEST DECISION: GOOD BATTERY**

Rated: 550 EN  
Measured: 592 EN  
Voltage: 12.64 V  
Temperature: 10 C


**RECOMMENDATION:**  
Battery condition is good and no further action is required until next service interval.



**CRANKING DECISION: GOOD BATTERY**

A measurement to determine the ability of the battery to start the vehicle.

**RECOMMENDATION:**  
The battery is in a healthy condition and has sufficient power to support the vehicle demands.




**RESERVE HEALTH: GOOD**

The ability of the battery to provide prolonged power to support the electrical components of "engine off" vehicle electronics.

**RECOMMENDATION:**  
Battery has good reserve capacity, and is able to provide power supporting vehicle electronics.

**ADDITIONAL COMMENTS:**  
Your comments here



Report Sent By: Your Workshop Name  
Service provided by ROBIS.io

- **Easy to access**
  - As soon as a technician has completed a battery test, it will be available to export on ROBIS.
- **Traffic Light Status**
  - Customers can easily see and understand results via traffic light statuses.
- **Recommendations**
  - The report will recommend actions that the customer should take (EG: the battery should be recharged). This will increase maintenance opportunities.
- **Customised to your business**
  - Your logo and address will automatically be added

# CPX-900 ROBIS



## Specifications

- **3.5 inch colour display**
  - Clear and easy to read
- **User swappable cables**
  - With one screw the cables can be replaced if they become damaged
- **WiFi Compatibility**
  - 802.11 2.4GHz
- **Bluetooth Capability**
  - Class 2 Bluetooth
- **Integrated Temperature Sensor**
  - For more accurate testing decisions
- **Reverse Polarity Protection**
  - If you accidentally put the incorrect clamp on it will not damage the tester.
- **Optional Integrated Printer**
  - Print off test results without the need of an external printer
- **Reverse Polarity Protection**
  - If you accidentally put the incorrect clamp on it will not damage the tester.
- **Conductance Profiling**
  - Identify if the battery can support all vehicle functions
- **ROBIS Connectivity**
  - Test results instantly upload to ROBIS when connected to Wi-Fi. Giving you and your customers insight into battery maintenance
- **Supported Battery Types**
  - Flooded Lead-Acid
  - AGM (Flat & Spiral)
  - EFB
  - Gel

- **Battery Ratings**
  - CCA
  - CA
  - MCA
  - JIS
  - DIN
  - SAE
  - IEC
  - EN